



Newsletter – *September 2012*

ASB Systems Pvt. Ltd.

Cutting-Edge!

Greetings!

The month of August is special for us, as it gives us a chance to host our favorite annual event, the Hypack conference.

This year too it was held with much fanfare, as is always associated with the Hypack conference. Mr. Patrick Sanders of Hypack, “Pat” as he is popularly known, won the hearts of the attendees using his trademark style. Held at the plush Bogmallo beach resort at Goa, the conference provided an opportunity to Hypack users to directly interact with its creator.

This month was also special for our service team, as we commissioned the brand new Elac 1185 multibeam system of Dhamra port. This multibeam system with cutting-edge German technology, will enhance Dhamra port’s maintenance capabilities.

In this issue...



Every Dredger’s beacon



A new beginning

At ASB

Multibeam of Dhamra port commissioned

Hypack Conference’12

Tech Tips

RS-232 communication

Customer satisfaction is our prime objective

Annual Hypack conference – 2012

Hypack Inc. and ASB systems' association goes back a long way, spanning almost two decades!

ASB Systems has been instrumental in Hypack's growing popularity in India. The conference not only serves as an advanced training cum question-answer session, but users also get an opportunity to convey their feedbacks and suggestions directly to Hypack.

Mr.Pat Sanders, President-Hypack, enthralled the attendees with his charming style, while show-casing the new features of Hypack.



Hemisphere GPS

The Hypack conference was followed by a seminar held by Hemisphere GPS. Mr.Cameron Baird, Director of Business development, and Mr.Ronald Ramsaran, Director - Production management, introduced the upcoming models and their features.

On display was the Hemisphere VS330, a dual frequency DGPS with SBAS, RTCM, CMR, CMR+ and dual antenna functionality. This unit boasts of a 20cm accuracy with the Omnistar feature; the two antennas can be seperated upto a distance of upto 10m for high accuracy heading. Some other promising models were also introduced in the seminar.

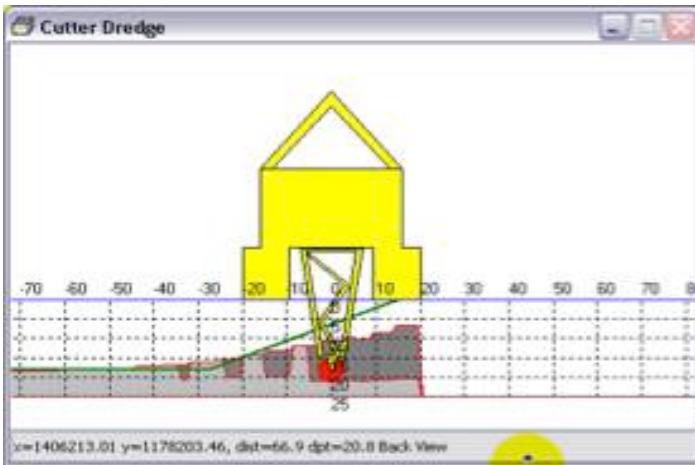
DREDGEPACK®

Real Time Dredging Information
for Excavators and Cutter Suction, Hopper and Bucket Dredges

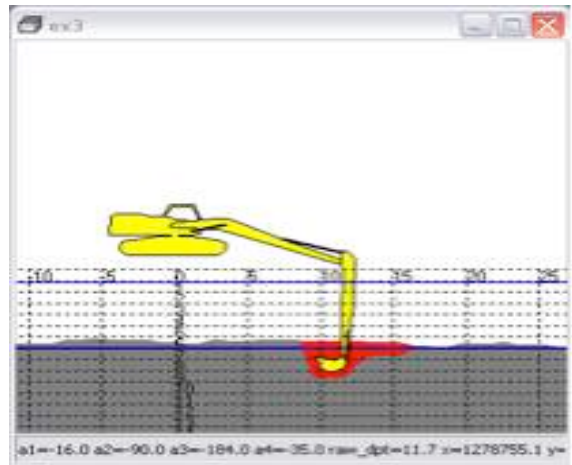


DREDGEPACK® enables you to monitor and track digging operations for hopper, cutter, and other dredge types. DREDGEPACK® monitors the position and depth of the cutting tool on the operator's screen in real time and re-maps the bottom based on the depth and location of the digging tool.

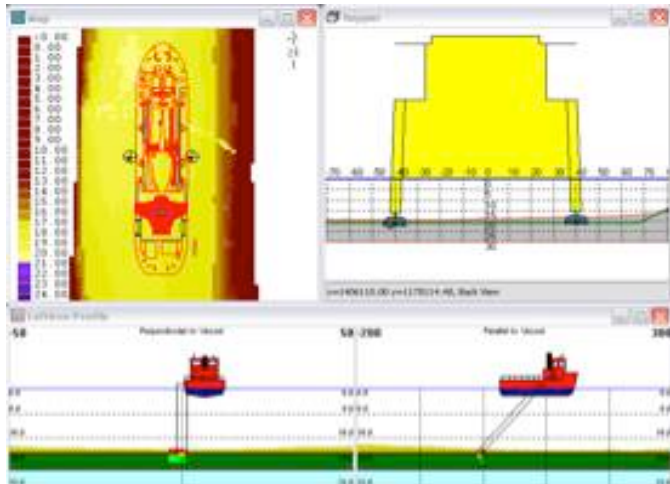
Cutter Suction



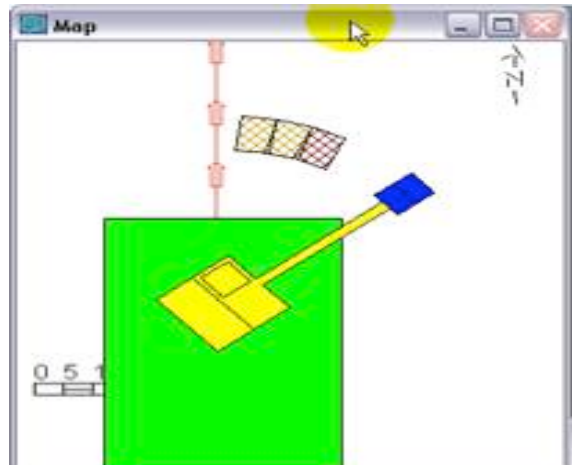
Excavator



Hopper

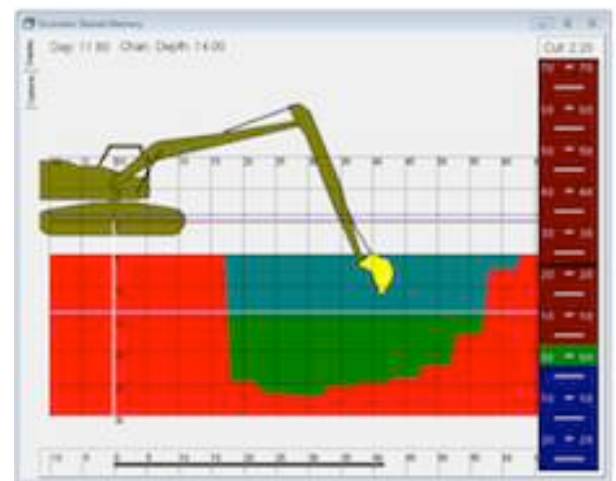
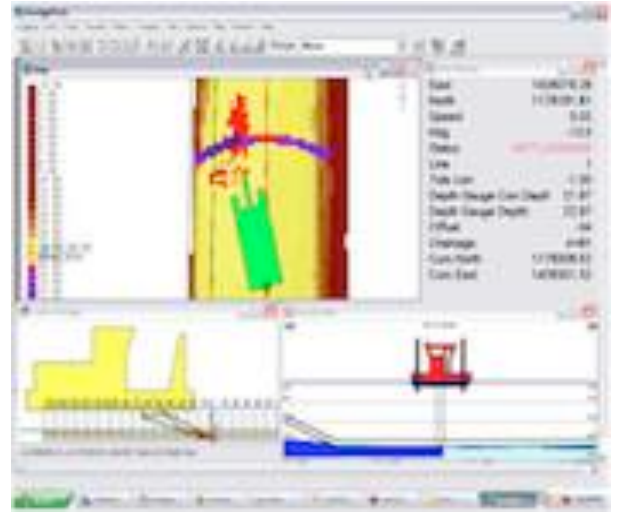


Crane & Bucket



Dredgepack allows its user to do things like :

- Precise digging over complex plans
- Real time visualization:
 - Plan view
 - Sectional views
- 3DTV Perspective view
- Working in depth or elevation mode.
- Area & volume calculations.
- Remote monitoring of dredging activities.
- Generating progress report with visual representation.
- Comparison of “As Surveyed” with “As Dredged” datasets.



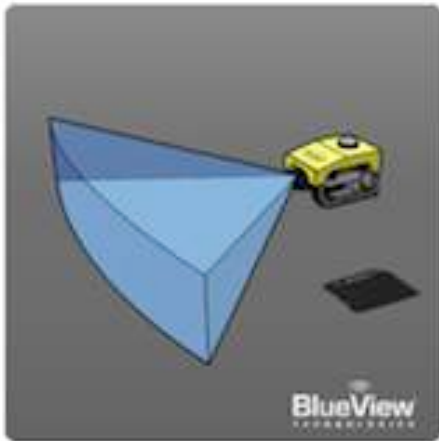
Dredgepack has been designed keeping in mind the requirements of dredging companies, and is a product developed through years of experience and user feedbacks. The package’s flexibility and simplicity remains unsurpassed.

Over 25 licences already sold to various dredging organizations within India, and this number is set to grow in the coming years! Do feel free to contact us with your requirement, we would be happy to help!!

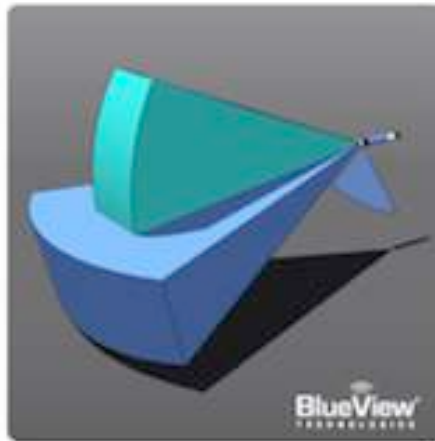


ASB Systems Pvt. Ltd. is proud to be associated with yet another world-class manufacturer !!!

2D Multibeam Imaging Sonar



Component AUV Modules



3D Mechanical Scanning Sonar



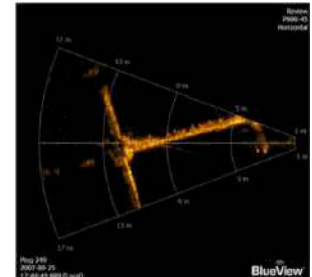
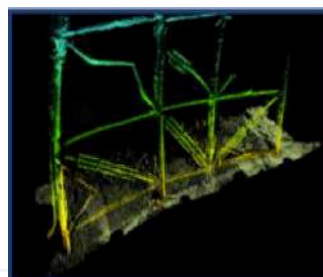
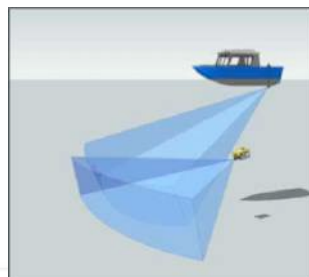
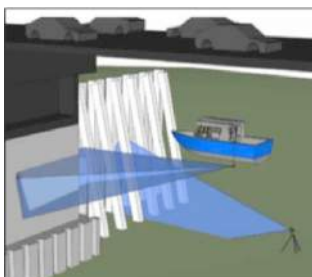
Applications –

In Survey: Blueview can Detect, identify, and measure obstacles and potential hazards with its 2D Imaging Sonar system.

Search & Rescue: Blueview can operate in zero visibility conditions. For faster and safer operations.

3D Mechanical scanning systems: Structure inspections, Scour monitoring, ship hull inspection, Rig positioning.

On AUV: Obstacle avoidance, navigation, pipeline tracking, mine detection.



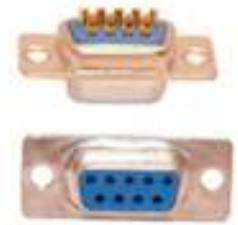
Tech Tips

A simple and effective way to test a COM port, using Null modem connector:

Get a 9-pin D-type female connector. Simply “short” its pin nos. 2 and 3, which are the transmit and receive pins.

Connect it to the COM port which you want to test. Start a COM terminal program like Hyperterminal or Pcommlite. Type some characters on the keyboard.

You should be able to see these characters on your screen as you type. The Null modem connector simply carries the data from pin no. 3 to pin no.2 so that it is read back on the same port. Advantage is that it can test a single COM port too.



Make your own “RS-232 LED based tester” !

This handy tester helps you to determine if RS232 data is coming-in on a cable. Simply plug-in this device and watch the LED flash.

You can also use the same to test data output from a computer’s COM port.

Just using a Green and Red LED and a 1K,1/4 W resistor. Solder the Green LED’s “anode” terminal to pin # 2 and the “cathode” to the resistor, whose other end is soldered to pin #5 of a 9 pin D type female connector. Do the same for the Red LED, whose anode must be soldered to pin # 3. Your “LED tester” is ready for use !



Complete your repair kit with “Gender Benders”!

These are off-the-shelf items and are locally available. Used to convert a typical “Male” connector to “Female” and vice-versa. Also available in 9 to 25 pin configurations. So that you are fully equipped to trouble-shoot all types of RS-232 data interfaces!

Happy Transceiving!!